

News at Roosevelt

September 2014

Principal—Lori Lockhart

Assistant Principal—Hillary Hornor

Dean of Students—Jamie Thompson



www.willmar.k12.mn.us/roosevelt/

1800 19th Ave. SW—Willmar, MN 56201

Phone: 231-8470

Fax: 231-1170

September 2014

Sun

Mon

Tue

Wed

Thu

Fri

Sat

	1	2	3	4	5	6
7	8	9	10	11	12	13
14	15 Picture Day Fundraising Packet Due	16	17	18	19	20
21	22	23	24	25	26	27
28	29	30	<div> <p>Looking Ahead to October</p> <ul style="list-style-type: none"> *Oct. 2 PTSA 6:30PM *Oct. 9th, 14th-15th Book Fair *Oct. 14th Fundraiser Product Delivery *Oct. 15th-17 MEA No School *Oct. 31 Fall Festival Grades K-2  </div>			

WELCOME BACK FROM ROOSEVELT ParentTeacherStudentAssociation

2014-2015 PTSA EVENT DATES MARK YOUR CALENDARS

September 5	Chip Shoppe Sales Fundraiser Kickoff
September 15	Fundraiser Packets Due Back
October 14	Fundraiser Product Delivery
October 9, 14, 15	Book Fair
October 31	Fall Festival (during school for students K-2)
November 10	School Mall Promo
November 21	Turkey Giveaway Bingo - 630 PM
January 23	Movie Night - 630 PM
March 6	Bingo for Books/Dr. Seuss Birthday 630PM
May 4-8	Staff Appreciation Week
May 15	Year End Celebration Dance - 630PM

Look for us every
month in the
Roosevelt News-
letter

PLEASE JOIN US AT OUR MONTHLY MEETINGS

Our MAJOR Fundraiser of the year begins on September 5th.

Proceeds go to assist with lyceums, bussing, music appreciation, PTSA sponsored events and so much more for our children!

THANK YOU IN ADVANCE FOR PARTICIPATING and REMEMBER, if you don't like to sell, cash donations are also accepted!

630pm

September 11
October 2
November 6
December 4
January 8
March 5
April 9
May 7

Visit us on Facebook!
Willmar Roosevelt PTSA
We have Updates, Information and Pictures!

Contact us at: willmarroosevelt-ptsa@gmail.com



Why Join PTSA?

The number one reason to join the Parent Teacher Student Association is to benefit your child. In doing so, you also help your school. But there are many more PTSA advantages:

- Get Connected
- Discover Great Resources
- Tap into a Network
- Watch Yourself Grow
- Speak Up
- Witness Improvement
- Be a Role Model

Song Fests

Hey music lovers. I know you can't wait to come listen to all of the beautiful music your children are learning. Here are the dates for our Song Fests this year:



Grade 5 Songfest– Friday, November 21st at 1:45 PM

Grade 2 Songfest– Friday, March 13th at 1:45 PM

Grades 3-4 Songfest in May with date yet to be determined



WILLMAR PUBLIC LIBRARY

Come to the public library and check out some new books. Did you know the Public Library does not just offer books?? Your child can come to the library the 2nd and 4th Tuesday of every month at 4:00 and join the **Chess Club**. The Library also has a **Children's Book Club** the 1st Tuesday of the month at 4:00, for 2nd through 6th grade students. Come to the Public Library and enter a whole new world



PARENTS

Please check out all of the news and activities available for your child. There are flyers, calendars, lunch menu etc. available next to the office.



Autumn leaves
Come falling down.
Red, orange, yellow,
brown.
Down, Down, Down.

Roosevelt PTSA Fundraiser

Roosevelt PTSA is in full Fundraiser Mode. Please share your fundraiser catalog with friends and families. The packets need to be turned in by Monday September 15th. The products will be delivered Tuesday October 14th.



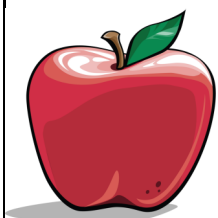
Creating Tangle Art

Do you like to doodle? Come and have fun learning how to draw tangles, which represent line patterns using colorful ink and gel pens.
All project materials included. Bring a snack.



#2103A– Grades 3-5 - Monday, Sept 22, 3:25-5pm, Kennedy Room 157, \$10
#2103B– Grades 3-5 -Tuesday, Sept 23, 3:25-5pm, Roosevelt Room 402, \$10
#2103C– Grades 6-8 - Friday, Sept 19, 2:50-5pm, Middle School Room 145, \$10

Leader: Jill Wotzka



SNOW WHITE & the Seven Dwarfs

Grades 1-12, November 10-15, WEAC
Leaders: Prairie Fire Children's Theatre
Details at www.willmarcer.com



Night Hike

Grades 4 and up
Friday, Sept 26,
7:30-9pm, \$5

#2307- Meet at PWELC and find out
what goes bump in the night!



Meet your friends at Cardinal Place!

M-F, 6:30am-6pm

Kennedy * Roosevelt

Full & Part Time rates

Call Jena at 214-6680 to enroll

Willmar Community Education & Recreation
1234 Kandiyohi Ave. SW, Willmar, MN 56201; 231-8490

Name _____ 14-15 Grade: _____

Address _____ Phone _____

Course # _____, # _____, # _____ Enclosed: \$ _____

Parents Name _____ Cell/work number: _____

Email: _____

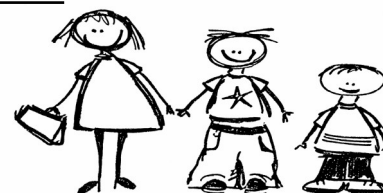
Emergency Contact _____ Phone _____

PLAY!

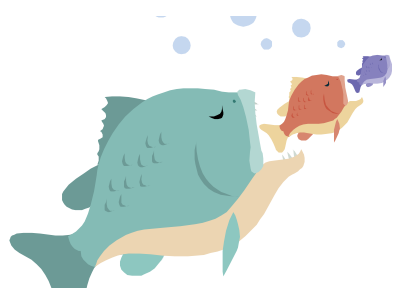
LAUGH!

LEARN!

*Discover something
just for you!*



September 2014



School of Fish on Ice Seminar

With Mike Frisch & team—fishing
educator and fishing TV show co-host
with 20 years experience as a PE Teacher

2192, Grades 3-5, Thursday, October 23
3:30-6:30pm, \$21, Roosevelt Band Room

Fun, friends and fishing! Kids will learn about finding fish, how and when to use various lures, and how to tie a knot and rig a rod/reel setup. Ice safety and instruction on using a winter sonar unit are also part of the fun. Each participant will receive the following kit to take home:

- *Quality ice rod and reel
 - *Fish on Kids Book, “A Whirlwind Opener”
 - *Tackle box and ice tackle
 - * KLN Family Brands Snack Bag
- Total value of kit- \$40!

Did you know?

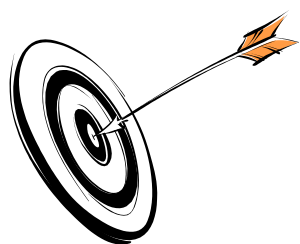
Did you know that WCER is **open** Monday-Friday from 8:00am to 4:30pm?

Did you know that you can **register** for a WCER class over the phone with a VISA . Master Card or Discover by calling 231-8490?

Did you know that you can earn your **GED** at Jefferson Learning Center's Adult Basic Education program?

Did you know that a wide variety of **Early Childhood** programs are offered at Jefferson Learning Center?

Did you know that you can check for WCER **weather related cancellations** by calling 231-8493?



Beginning Archery

All Ages— Youth & Adult
Tuesdays, October 14, 21 & 28
6-8pm, \$20

#2150A— Come and learn the basics of shooting etiquette and equipment in a fun and relaxing environment. Equipment and instruction provided. Meet at Little Archers Indoor Range, 435 Benson Ave SW, downstairs. Pre registration is required.